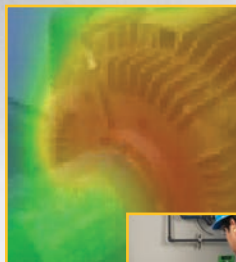
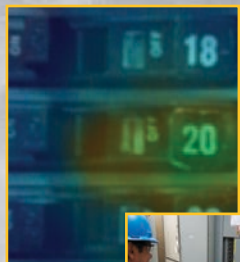


KEY APPLICATIONS

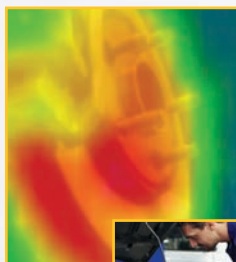
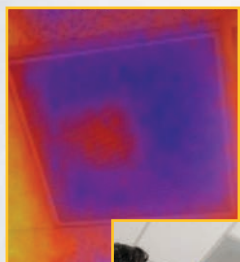


Electrical

- Electrical panels and wiring
- Fuses and insulators
- Switch gear

Industrial maintenance

- Motors, pumps, bearings and windings
- Belts and drive shafts
- Steam traps



HVAC/R

- Ducts, grills and diffusers
- Heating and cooling systems
- Bearing components
- Pipes

Automotive

- Brakes
- Condensers
- Wiring, bearings, exhaust systems and manifolds
- Hydraulics, compressors and seals

3 EXCITING MODELS

	VT02	VT04/ VT04A
Built-in digital camera	Yes	
Infrared heat map overlay	Yes (five blending modes)	
Image optics system	PyroBlend™ optic	PyroBlend™ Plus optic, 4 x sharper image
Center-point temperature measurement	Yes	
Field of view	20° x 20°	28° x 28°
Battery (8 hours)	4 AA batteries	VT04: Li-Ion rechargeable; VT04A: Four (4) AA batteries
Temperature alarms	—	Yes
Temperature range	-10 °C to +250 °C (14 °F to 482 °F)	
Temperature measurement accuracy	± 2 °C or ± 2 %	
Compact, intuitive, and focus free	Yes	
SD card (4 GB included)	Yes –up to 9,999 images	
Professional reporting SmartView® software	Free download from Fluke website. www.fluke.com/vtsmartview	

SGM Lab Solutions

Regd. Office:

BA-15, Mangolpuri Industrial Area Phase-II
Delhi-110034 +91-11-48481414,
+91-8130897474

Branch Office:

No.26, "Shri" Complex, 2nd Floor, Bendre Nagar,
Above "SBM" ATM, Subramanya Pura Main Road,
Kadirenahalli, Bangalore-560070 +91-80-42287106,
+91-9902011444

Fax: +91-11-4385 2040

Email: info@lab360.co.in

FLUKE®

Visual IR Thermometers

DETECT ISSUES INSTANTLY



VT02

VT04/
VT04A

**A troubleshooting tool
with an infrared heat map**

SEARCHING FOR TEMPERATURE ISSUES SPOT BY SPOT?

Traditional IR thermometers are designed for only one purpose — detecting single-spot temperature readings.

If you don't know exactly where to look, you can miss a serious problem or waste valuable time searching.



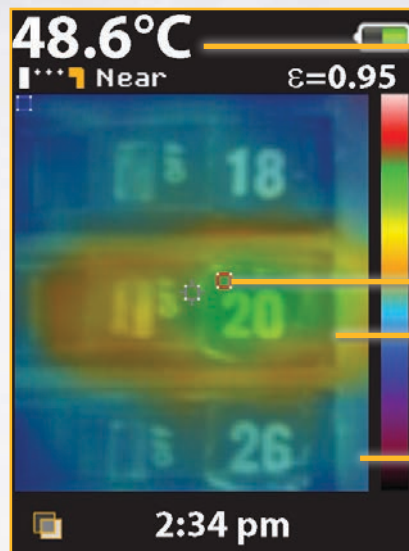
HOT AND COLD SPOTS CAN'T HIDE ANYMORE

Visual IR thermometers combine the convenience of a point and shoot IR thermometer with the visual insight of an infrared heat map so you can see the complete picture.



DESIGNED TO SEE IT ALL

Every Fluke Visual IR Thermometer has a built-in digital camera with an infrared heat map overlay to instantly identify the exact location of the problem.



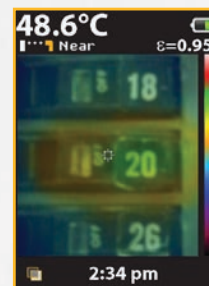
Center-point temperature (°C/°F)

Hot and cold markers

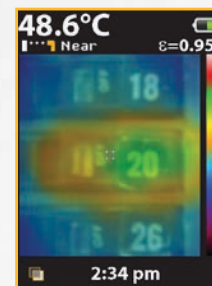
Digital image for context

Clearly see that breaker 20 is overloaded and communicate your findings.

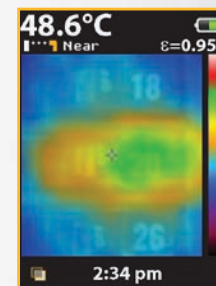
Infrared heat map overlay



25 % heat map



50 % heat map



75 % heat map

GET THE PERFECT FIT FOR YOU

- Fits in your pocket
- Fits your budget – priced to outfit your entire team
- Fits the way you work – get to work as soon as you take it out of the box

